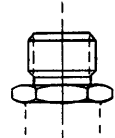
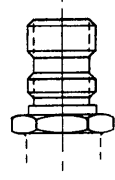


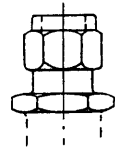
B - (MS33657)
D - (MS24386)



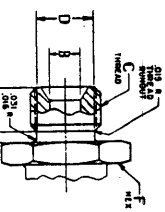
Q - (MS33514)



F - (MS33515)

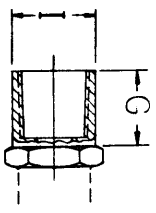


S - (SARGELK)
INCLUDES - NUT, FRONT
FERRULE, AND BACK FERRULE

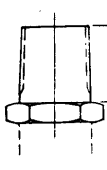


P-MANIFOLD
MS 33656 TRUNCATED
WITH MS 33614 HOLE SIZE

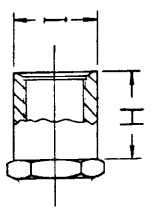
SEE DWG. NO. 1000 FOR ADDITIONAL PORT CONFIGURATIONS.



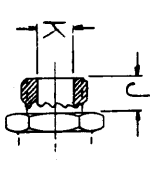
R - FEMALE PIPE THD.



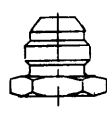
Q - MALE PIPE THD.



T - MS33649-() FEMALE



Z-MANIFOLD, AS930



A - (MS33656)
C - (MS24385)

NOMINAL BODY SIZE	A	B	C THREAD	D	E ₁	F ₁	G _A	H _A	I	J	K
-2 (1/8)	.270	.093	.3125-24UNJF-3A	.250	.063	.563				.360	.093
-4 (1/4)	.350	.187	.4375-20UNJF-3A	.364	.075	.688	0.70	0.85	0.68	.400	.172
-6 (3/8)	.350	.297	.5625-18UNJF-3A	.481	.083	.813	0.70	0.85	0.81	.400	.297
-8 (1/2)	.400	.422	.750-16UNJF-3A	.660	.094	1.000	0.90	1.00	1.00	.440	.391
-10 (5/8)	.490	.500	.875-14UNJF-3A	.773	.107	1.125	0.90	1.11	1.17	.440	.484
-12 (3/4)	.540	.656	1.0625-12UNJ-3A	.945	.125	1.375	0.90	1.21	1.37	.480	.609
-16 (1)	.585	.875	1.3125-12UNJ-3A	1.195	.125	1.625	1.20	1.35	1.62	.480	.844
-20 (1-1/4)	.585	1.093	1.625-12UNJ-3A	1.507	.125	1.875	1.30	1.40	1.87	.480	1.078
-24 (1-1/2)	.688	1.344	1.875-12UNJ-3A	1.756	.125	2.125				.480	1.312
-32 (2)	.688	1.813	2.500-12UNJ-3A	2.381	.125	2.750				.480	1.781

3 A, B, C, AND D STYLE PORTS ARE AS SPECIFIED EXCEPT THROUGH HOLE ON -.02 SIZE IS .093 Ø. THESE DIMENSIONS ARE FOR ALUMINUM AND DELRIN HOUSINGS. HOUSINGS MADE OF CRES 17-4 PH ARE SLIGHTLY LONGER.

1. TOLERANCES ARE IN ACCORDANCE WITH MS 33656.

NOTES:

DIMENSIONS ARE IN INCHES
TOLERANCES
.XXX ± .030 .XXX ± .010

TITLE TYPICAL END FITTINGS	
SIZE CODE IDENT NO DRAWING NUMBER C 11362 1004	REV. SHEET OF 35